

Discussion Points

- District - Key Metrics
- District – Profile
- Act 89 – Building on the Benefits
- Road Maintenance & Preservation (MaP)
- PennDOT Connects Policy
- District 8 Challenges



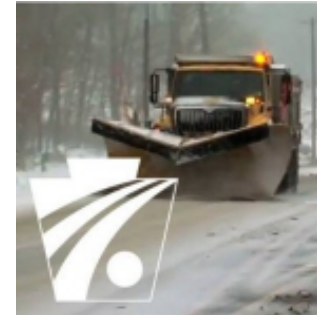
Key Metrics – Business Plan

- Project Delivery – 100%
- Asset Management/Investment Plan
 - Reduce SD Deck Area
 - Roadway Conditions (Lowest Cost/Segment Mile)
 - Decade Of Investment Program
- Winter Services
- Fiscal Stewardship
- Improve Trends regarding Accidents/Safety
- Transformation & Innovation



Key Metrics – Winter Services

- 310 Trucks: Most are Tandem (16 Tons)
- 10% of Network Under Municipal Agreements
 - Looking for Opportunities to Expand
- 37 Rentals
 - Small/Local Contractors
 - Limited Success with Large Highway Construction Contractors
- Expanded Rental Options for Significant Events
- Hire Winter Temps to Supplement Staff



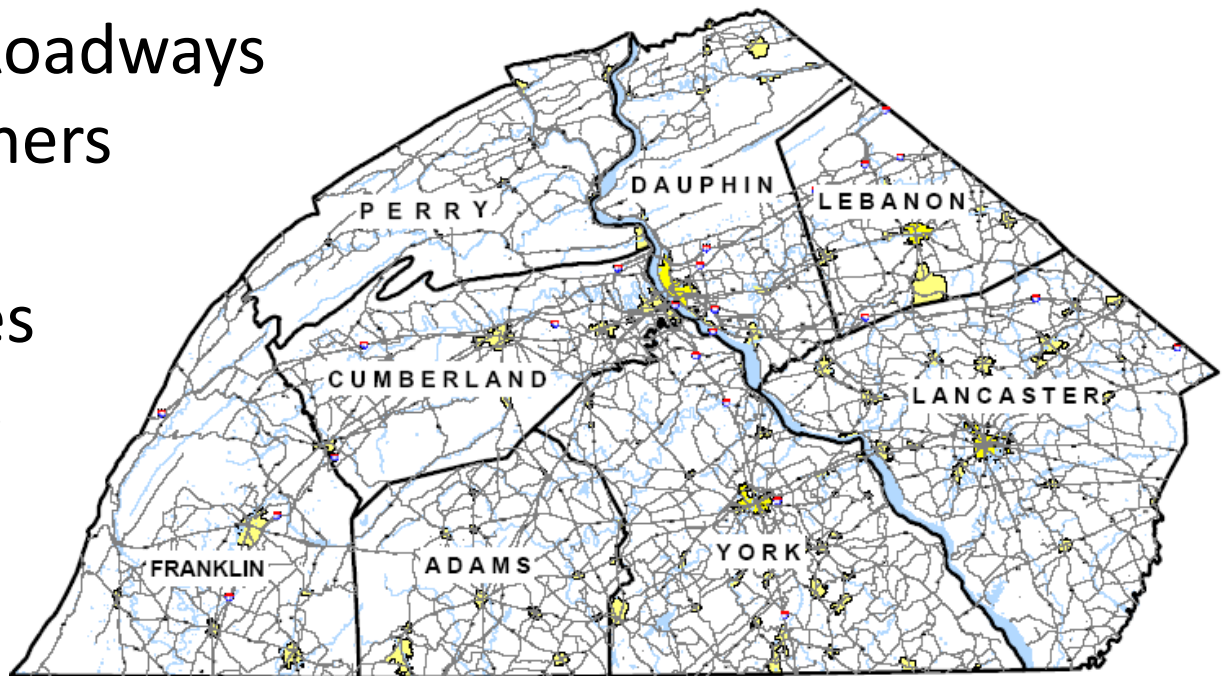
Key Metrics





District 8 Profile

- 8 Counties South-Central Region
- + 3400 Bridges (477 SD, SD Deck Area 6.50%)
 - 91 P3 Bridge Projects
- + 5200 Miles of Roadways
- Six Planning Partners
- 1110 Employees
- 316 Municipalities
- 91 Public Schools
- 36.19 MDVMT



Act 89 – Building on the Benefits

- \$2.4 Billion/Year Program
 - Delivery of Decade of Investment Projects
 - Advance Capacity Adding Projects
 - Begin to Address Reconstruction Needs
 - Improve Assets (Bridges & Roadways)
 - SD #'s reduced to 3,512 from 6,034 in 2008
 - P3 Bridge Program
- \$466 Million for Local Roads (MLF 2017)*
 - 60% Total Increase in MLF Payments over 5 Years
- Multimodal Funds/Program



Act 89: I-83 Capital Beltway

- East Shore Section 1
 - Contract #1 OH Bridges, Bid April 7th (\$34Million)
 - Contract #2 Widening/Reconstruction (\$133M)
- Complements Work Completed on the West Shore (I-83/SR 0581)
- Total Investment Planned – plus \$900M



Act 89: Additional Regional Projects

- I-81 Widening: East Shore\West Shore
- Recently Bid PA 283 Reconstruction
 - Includes Modifications to PA Turnpike Interchange
- I-83: Design Underway for Remaining Sections
 - ESS2: Eisenhower Interchange
 - ESS3: Remaining Section to South Bridge
- District 8 Construction Program: \$240M/Year



Act 89 – Building on the Benefits

Act 89 Objectives not Reached:

- TFAC Final Report in 2011: \$3.5 Billion
- No PSP Cap – \$300M TFAC Report
- Automated Speed Enforcement



Road Maintenance & Preservation (MaP)

- June 2016 legislation passed to cap expenditures from the Motor License Fund going to PSP
- 2017-2018 Allocation to PSP is \$805M
- Beginning FY 2018-2019 PSP funding from the Motor License Fund decreases by 4% each year through 2027-2028
- Over this 10 year period, \$2.1 Billion in revenues will come back to PennDOT



Road Maintenance and Preservation (MaP)

- Secretary Richards committed to put \$1 Billion into Maintenance as County Budgets have essentially been held flat since 2005-2006

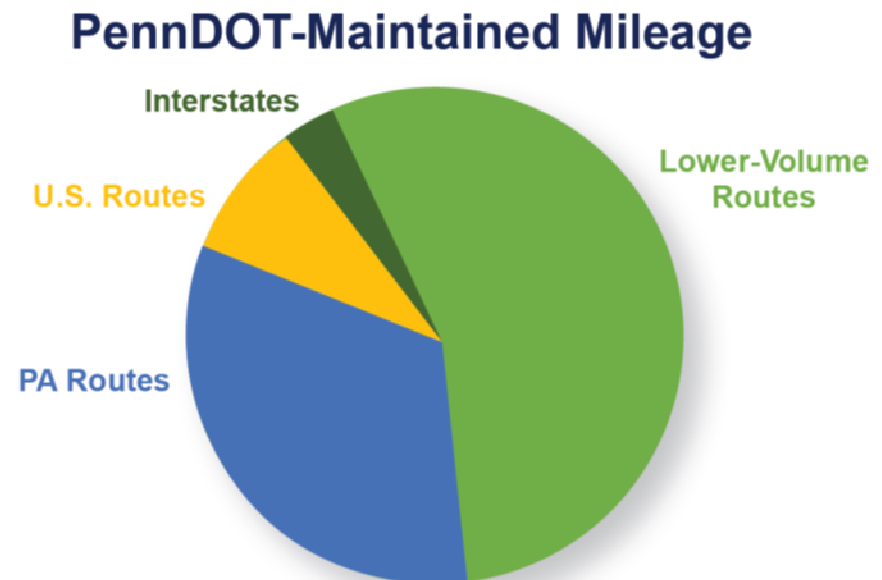
Remaining \$1.1 Billion:

- \$500 Million to support Interstate Preservation and Reconstruction Program
- \$600 Million to Capital Highway and Bridge Projects



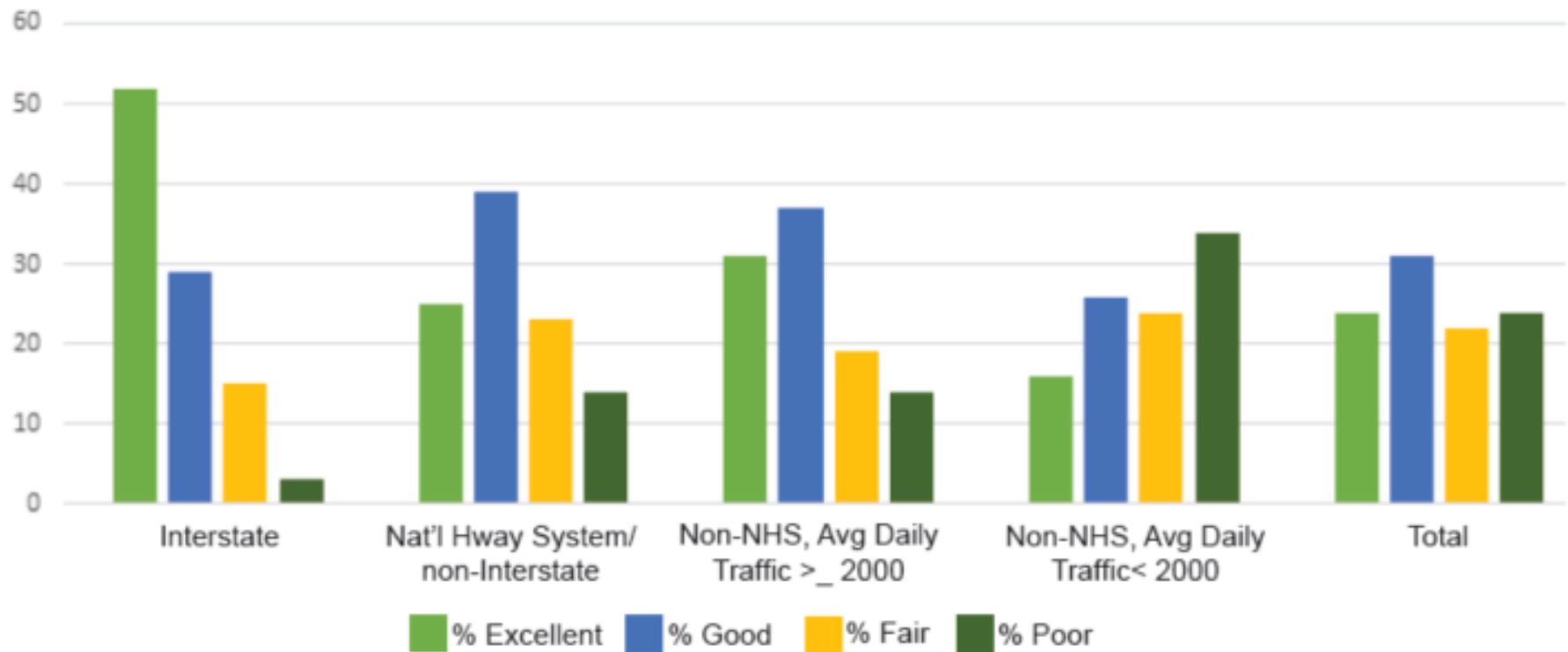
Road Maintenance and Preservation (MaP)

- Funding for Maintenance:
- Improve lower volume roadways; 18,000 miles of lower volume facilities which are maintained by seal coat or bituminous resurfacing



Road Maintenance and Preservation (MaP)

PA Roadway International Roughness Index (IRI) Ratings



Road Maintenance and Preservation (MaP)

- What does this mean for District 8:
- By FY 2027-2028 County Budgets in District 8 will increase by \$18M/Year.
- District 8's Construction Program on average is about 10% of the Statewide Total so we would expect an additional \$110M in investments over this same period.



PennDOT Connects Policy



GOAL: Better Communities and Mobility Powered through Collaboration

PennDOT Connects:

- **builds** partnerships that invest in sustainable transportation.
- **leverages** resources to improve communities.
- **leads and innovates** for a more livable Pennsylvania.
- **delivers** projects that improve economic competitiveness, access to work, and overall quality of life.



Themes of Connects



Community Collaboration



Collaborating With Communities

PennDOT is:

- Investing in a community with each project.
- Involving communities at the beginning of the planning process.
- Learning what elements may be important to include in the project to support a community's vision.



How It Works

- PennDOT and our planning partners meet with local governments to discuss details for each project prior to developing project scopes and cost estimates.
- All mobility needs are considered.
 - Bicycle
 - Pedestrian
 - Transit
 - Freight
 - Operations and ITS
 - Utilities
 - Community health
 - Stormwater management
 - Green infrastructure



Policy

- Secretary's Directive – December 2016
- Design manual changes for project planning and development to incorporate PennDOT Connects - June 2017.
- Linking Planning and NEPA redone to become PennDOT Connects project initiation.
- Long Range Transportation Plan guidance modifications - June 2017.
- Connects meetings on all new 2017 TIP projects - underway.
- Connects Pre - 2019 TIP Meetings, June - December 2017.



District 8 Challenges

- Long Term Needs on I-81 and I-83
 - \$2.7 Billion to Widen I-81 from MD to I-78
 - \$2.5 Billion to Widen I-83
- Recruitment – Competing w/Private Sector
 - Engineers
 - Operators
 - Diesel Mechanics



Questions

